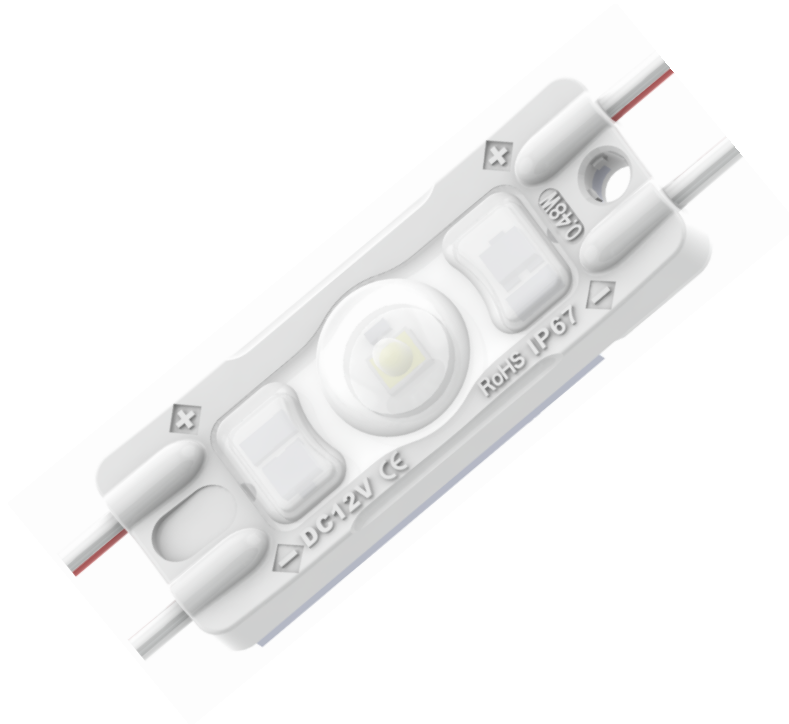


**VISCOM**  
LEDS & FRAMES ●●●

Best for 30-100 mm depth light  
boxes and channel letters

**5 years warranty**



**AD LED 50**

### Created for:

- Illumination of small-medium depth light boxes and channel letters.
- Faster installation.
- Optimal for 30-100 mm depth illumination.

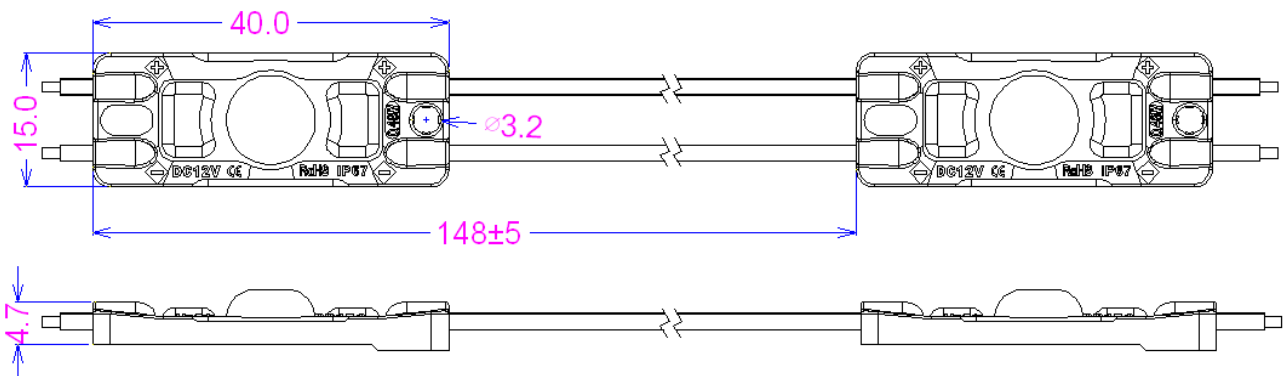
### Applications:

- Channel letter lighting
- Commercial standing lighting
- Letter background lighting
- Light box lighting
- Logo lighting
- Line/shape lighting

### Special features:

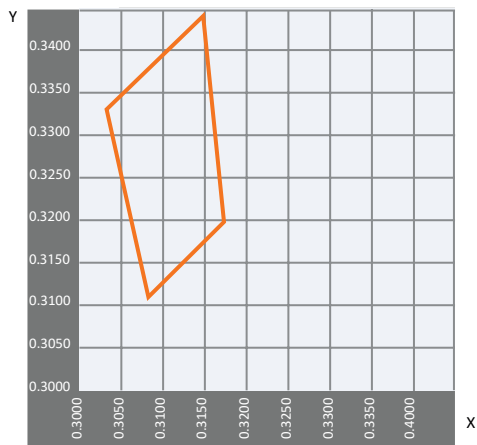
- Constant Current Technology (CCT), protection inside.
- Aluminum plate for heat dissipation
- Waterproof: IP 67
- Bigger chip, 10% brighter than before
- Energy saving
- Environment friendly
- Long life span, 50000 h L70

### Module dimensions (mm)

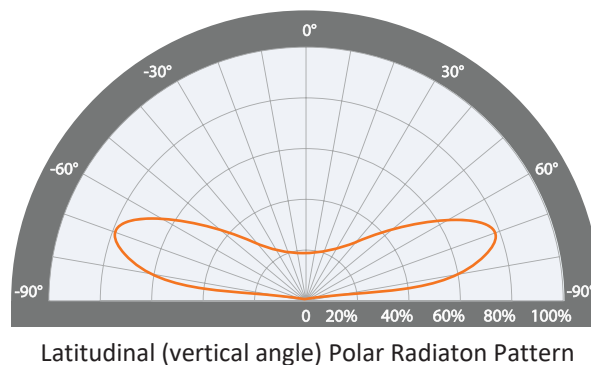


Part#	Input	Typical luminous flux	Power	Color temperature
ADLED010565	12 V	52±5 lm	0,48 W	6500-7100K
ADLED010532	12 V	50±5 lm	0,48 W	3000-3200K
ADLED010541	12 V	52±5 lm	0,48 W	3000-3200K
ADLED0105R	12 V	18±2 lm	0,36 W	RED
ADLED0105B	12 V	8±3 lm	0,36 W	BLUE
ADLED0105G	12 V	24±2 lm	0,36 W	GREEN

### Color temperature CIF graph



### Led module light distribution graph



### CIE graph coordinates

CIE x	CIE y
0,3080	0,3110
0,3030	0,3330
0,3150	0,3440
0,3170	0,3200

### Led module light distribution table

Relative intensity	Angle
20%	172°
50%	160°
80%	142°

### Package Weight

Item	Quantity	Neto	Bruto
Chain	50 pcs	0.300 kg	0.300 kg
Bag	100 pcs	1.200 kg	1.220 kg
Box	1200 pcs	14.400 kg	15.200 kg